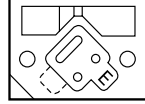
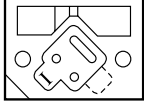


FEATURES

- Unit can be mounted individually or joined together by using diabolos with sunken locking screws
- Valves are fitted with pilot seals, which means that valves can be adapted to: internal supply (mark I) or external supply (mark E).



GENERAL

| | |
|----------------------------|---|
| Fluid | Air or neutral gas, filtered, lubricated or not |
| Operating pressure | 2 to 10 bar |
| Pilot pressure | With external supply, the pilot pressure must be equal or superior to the pressure in the valve |
| Ambient temperature | -10°C to +60°C |
| Flow (Qv at 6 bar) | See "specifications" |

CONSTRUCTION

| | |
|---------------|---------------|
| Body | Zinc diecast |
| Poppet | Aluminium |
| Seals | NBR (nitrile) |

ELECTRICAL CHARACTERISTICS

| pilot | voltage | | consumption | | insulation class | degree of protection | electrical connection |
|------------|---------|------------------------|-------------|----------------|------------------|----------------------|--|
| | ~ | = | inrush | hold | | | |
| series 189 | ~ | 24V-48V-115V-230V/50Hz | 6 VA | 3,5 VA (2,5 W) | F | IP 65 | spade plug size 22 connector DIN 43650, 11 mm, industry standard B, rotatable x 180° |
| | = | 24V-48V | 2,5 W | | | | |

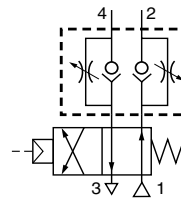
SPECIFICATIONS

| symbol | pipe size | orifice size (mm) | flow | | fluid pressure (bar) | | 2 catalogue numbers | | | |
|--------|--|-------------------|----------------------|----------------|----------------------|------|---------------------|---|---------------|-----|
| | | | at 6 bar l/min (ANR) | Kv coefficient | min | max. | valve | + | pilot (~ / =) | (M) |
| | ports 2-4 with instant fittings ports 1-3: G1/8 | 3 | 210 | 3 | 2 | 10 | 26390005 | + | 18900001 | ● |
| | tapped G1/8 | 3 | 210 | 3 | 2 | 10 | 26390002 | + | 18900001 | ● |
| | tapped G1/4 | 6 | 840 | 12 | 2 | 10 | 26490026 | + | 18900001 | ● |

(M) Type of manual operator on pilot(s) : ● : maintained

ACCESSORIES

- Unit consisting of 2 flow regulators, joinable
 - for valve 263 (instant fittings \varnothing 6 mm) - cat. no.: **34600211**
 - for valve 263 (G 1/8) - cat. no.: **34600209**
 - for valve 264 (G 1/4) - cat. no.: **34600109**
- Transfer unit for association of valves series 263 and 264, allowing communication of pressure feed (1) and exhaust (3) ports (18 mm thick). - cat. no.: **88126303**
- Power supply unit separate from main pressure
 - for valve 263 (G 1/8) - cat. no.: **88126301**
- The valves series 263 can be mounted on EN 50022 - AFNOR NF C63015 rail using mounting clips.
 - 10 clips - cat. no.: **33400036**

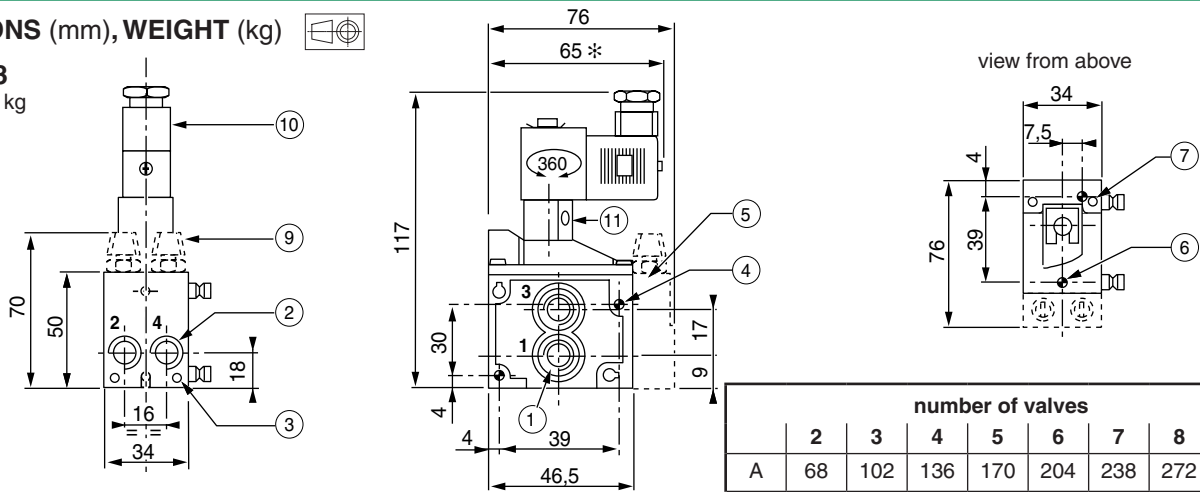


OPTIONS

- For equipment and pilot valves for use in potentially **explosive atmospheres** caused by dusts or gases, in accordance with ATEX Directive 2014/34/EU.

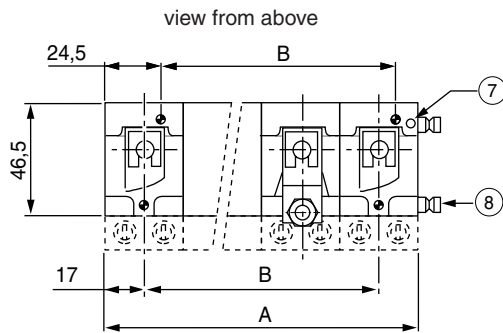
DIMENSIONS (mm), WEIGHT (kg)

VALVE 263
weight: 0,450 kg



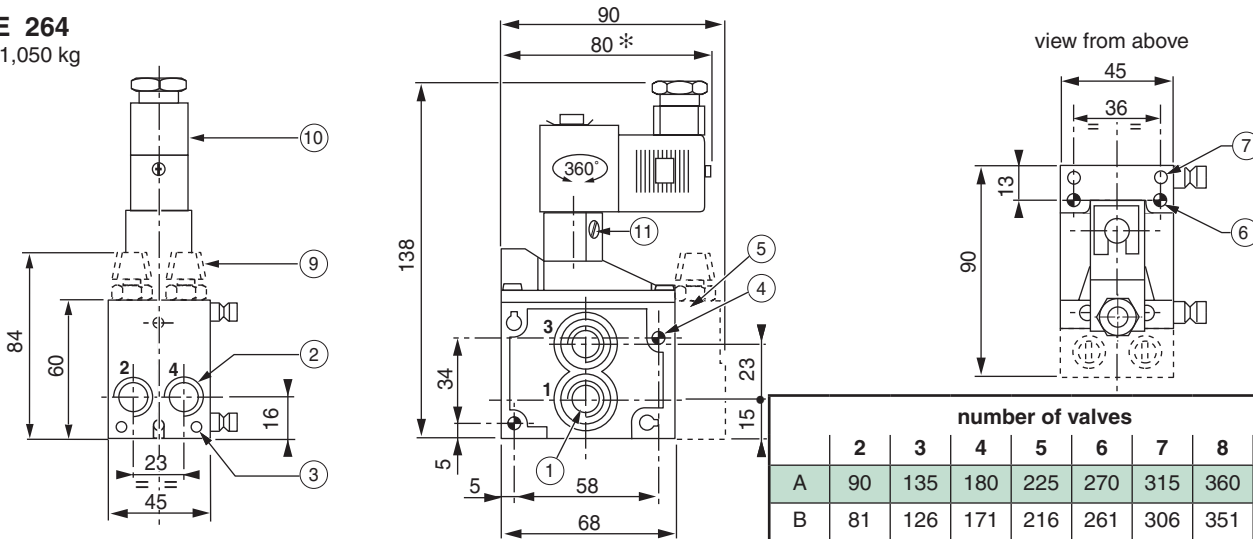
| number of valves | | | | | | | | |
|------------------|----|-----|-----|-----|-----|-----|-----|------|
| | 2 | 3 | 4 | 5 | 6 | 7 | 8 | + 1 |
| A | 68 | 102 | 136 | 170 | 204 | 238 | 272 | + 34 |
| B | 34 | 68 | 102 | 136 | 170 | 204 | 238 | + 34 |

Joinable valves



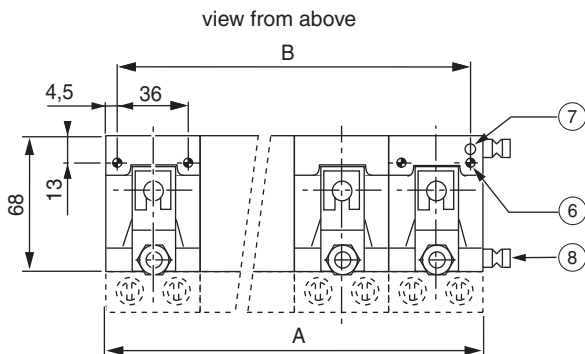
- ① 4 ports G 1/8
Valve supplied with 1 plug on orifices 1 and 3 seal joints
- ② 2 ports G 1/8 or instant fittings Ø 6 OD
- ③ 2 grub screws for joining spindles
- ④ 2 screws for side mounting Ø 4,2 x 34
- ⑤ Accessory : Flow regulator
- ⑥ Top mounting 2 holes Ø 4,2 x 50
- ⑦ 2 grub screws for joining spindles
- ⑧ Joining spindles
- ⑨ Flow rate adjustment buttons
- ⑩ Pilot series 189
- ⑪ Manual operator
- * +15 mm for plug removal

VALVE 264
weight: 1,050 kg



| number of valves | | | | | | | | |
|------------------|----|-----|-----|-----|-----|-----|-----|-----|
| | 2 | 3 | 4 | 5 | 6 | 7 | 8 | + 1 |
| A | 90 | 135 | 180 | 225 | 270 | 315 | 360 | +45 |
| B | 81 | 126 | 171 | 216 | 261 | 306 | 351 | +45 |

Joinable valves



- ① 4 ports G 1/4
Valve supplied with 1 plug on orifices 1 and 3 seal joints
- ② 2 ports G 1/4
- ③ 2 grub screws for joining spindles
- ④ 2 screws for side mounting Ø 5,5 x 45
- ⑤ Accessory : Flow rate regulator
- ⑥ Top mounting 2 holes Ø 5,5 x 60
- ⑦ 2 grub screws for joining spindles
- ⑧ Joining spindles
- ⑨ Flow rate adjustment buttons
- ⑩ Pilot series 189
- ⑪ Manual operator
- * +15 mm for plug removal